

SOFTY-TEX®



Patent registered: 1679022

1 100 % Polyester-Trägergewirke 2 Hochwertige Vinyl-Beschichtung 3 Patentierte Rückseitenprägung 4 Bedruckung 5 Oberflächen-Versiegelung	1 Supporto in maglia di poliestere 100% 2 Pregiato rivestimento in vinile 3 Struttura brevettata del rovescio 4 Stampa 5 Superfici impermeabilizzate	
1 100 % Polyester carrier material 2 High-value vinyl coating 3 Patented reverse embossing 4 Printed 5 Surface sealing	1 Tejido de soporte 100% de poliéster 2 Recubrimiento vinílico de alta calidad 3 Estampación en relieve patentada en la parte posterior 4 Impresión 5 Sellado superficial	
1 Matériau de support polyester à 100 % 2 Revêtement vinyle de grande qualité 3 Gaufrage de l'envers breveté 4 Impression 5 Etanchéité de surface	1 100 % полиэфирный несущий материал 2 Высококачественное виниловое покрытие 3 Запатентованный рельеф задней поверхности 4 Нанесённая печать 5 Модифицированная поверхность	
SOFTY-TEX®		
Dicke / Gauge / Epaisseur / Spessore / Grosor / Толщина	DIN EN ISO 24346 / 4,8 ± 0,5 mm	
Gesamtgewicht / Total weight / Poids total / Peso totale / Peso total / Общий вес	DIN EN ISO 23997 / 620 ± 50 g/m ²	
Lichtechtheit / Lightfastness / Stabilité à la lumière / Stabilità alla luce / Resistencia a la luz / Натуральные цвета	DIN EN ISO 105-B02 / ≥ 7	
Verschleißverhalten / Wear and tear / Résistance à l'usure / Resistente all'usura / Comportamiento al desgaste / Изнашиваемость	DIN 53528 / ≤ 0,10 g/50 cm ²	
Maßliche Stabilität (6 h 80 °C – 24 h Normalklima) Längs-Querrichtung / Size stability (6 h 80 °C – 24 h Normal climate) Longitudinal-lateral direction / Stabilité dimensionnelle (6 h, 80 °C – 24 h conditions normales de climat) dans le sens longitudinal-latéral / Stabilità dimensionale (6 h 80 °C – 24 h condizioni climatiche normali) in direzione latero-longitudinale / Estabilidad dimensional (6 h 80 °C – 24 h clima normal) sentido longitudinal-transversal / Размерная стабильность (6 ч 80 °C – 24 ч при нормальном микроклимате) Продольно-поперечное направление	DIN EN ISO 23999 / ± 1,0 %	
Geruch / Smell / Odeur / Odore / Olor / Запах	VDA 270 C3 / 2 - 3	
Wasseraufnahme / Water absorption / Absorption d'eau / Assorbimento idrico / Absorción de agua / Водопоглощение	in Anl. DIN EN ISO 62 / ≤ 80 %	



Patent registered: 1679022



Hochwertige Oberflächenversiegelung mit spezieller Strukturprägung und eingeschäumtem Trägergewirke aus reißfesten Polyesterfäden stellen die Basis dieser Bodenbelagsqualität dar.

- Schmutzabweisend und leicht zu reinigen
- Wasserabweisend mit Drainagewirkung
- Abriebfeste Oberflächenstruktur
- Rutschhemmend
- Geeignet für Sauna und Fußbodenheizung
- Antibakteriell ausgerüstet, hygienisch und hautsympathisch
- Temperaturbeständig von -10 °C bis +95 °C
- Beständig gegen Reinigungs- und Desinfektionsmittel
- 100 % Polyester, Vinyl-Beschichtung



Ineguagliata impermeabilizzazione delle superfici, struttura unica nel suo genere ad effetto prismatico e speciale supporto in maglia espansa costituita da fili di poliestere antistrappo: sono i solidi elementi alla base della straordinaria qualità del rivestimento per pavimenti.

- Con particolare protezione antisporco e di facile pulizia
- Idrofugo, elevato effetto drenante
- Struttura con superficie antigraffio
- Antisdrucciolo grazie alla struttura brevettata del rovescio
- Idoneo a saune e al riscaldamento a pavimento
- Dotato di protezione antibatterica, igienico e gradevole al tocco
- Resistente a temperature comprese tra -10 °C e +95 °C
- Resistente a detergenti e disinfettanti
- 100 % poliestere, rivestimento in vinile



High quality surface sealing with embossed structure and a special formed carrier material made of tearproof polyester fibres form the solid basis of this floor covering.

- Dirt-resistant and easy to clean
- Water-resistant with drainage effect
- Abrasion-resistant surface structure
- Anti-slip effect through patented embossing
- Suitable for usage in saunas and with underfloor heating
- Anti-bacterial finish, hygienic and kind to skin
- Temperature resistant from -10 °C to +95 °C
- Resistant to disinfectant and cleaning agents
- 100 % polyester, vinyl coating



Un sellado de superficies inigualables, una estampación estructural única con efecto de prisma y un tejido de soporte de hilos de poliéster especialmente revestido con espuma son la sólida base de esta extraordinaria calidad de revestimiento de suelo.

- Especialmente repelente a la suciedad y fácil de limpiar
- Repelente al agua, gran efecto de drenaje
- Estructura superficial resistente a la abrasión
- Antideslizante mediante grabación en relieve patentada en el reverso
- Adecuado para sauna y suelo radiante
- Con propiedades antibacterianas, higiénico y agradable al tacto
- Resistente a temperaturas de entre -10 °C y +95 °C
- Resistente a productos de limpieza y desinfección
- 100 % poliéster, revestimiento de vinilo



Une étanchéité de surface imbattable, un apprêt gaufré unique avec effet prismatique et un matériau de support spécial expansé en fibres de polyester constituent la base de cette qualité extraordinaire de revêtement de sol.

- Anti-taches et facile à nettoyer
- Hydrophobe, excellent effet de drainage
- Structure de surface résistante à l'usure
- Surface antidérapante par un gaufrage de l'envers breveté
- Convient pour une utilisation dans les saunas et avec un chauffage pour le sol
- Avec équipement antibactérien, hygiénique et doux pour la peau
- Résiste à des températures de -10 °C à +95 °C
- Résiste aux produits de nettoyage et aux agents désinfectants
- 100 % polyester, revêtement vinyle



Непревзойдённое качество обработки поверхности, уникальная структура с призматическим эффектом и специальным несущим пеноматериалом из прочных полиэфирных волокон – всё это солидная база данного удивительного качества напольного покрытия.

- Особые грязеотталкивающие свойства и легкий уход
- Водоотталкивающие свойства, высокая дренажная эффективность
- Структура поверхности устойчива к истиранию
- Противоскользкие свойства благодаря запатентованному рельефу изнанки
- Подходит для сауны и для полов с подогревом
- С антибактериальными свойствами, гигиеничность и комфорт при соприкосновении с кожей
- Термостойкость от -10 °C до +95 °C
- Устойчивость к чистящим и дезинфекционным средствам
- 100 % полиэстер, виниловое покрытие



SOFTY-TEX®



NEW

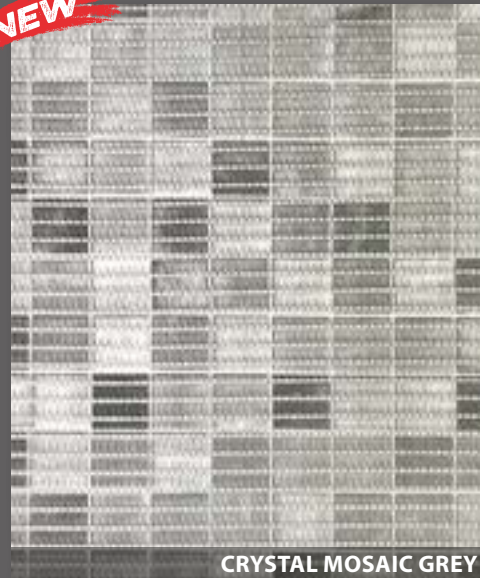


SHADOW GREY MOCHA

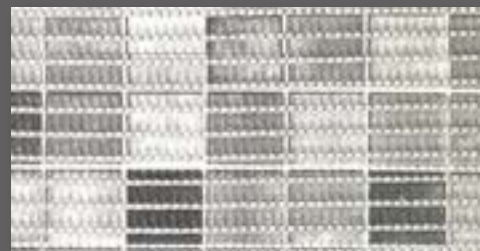


15 m
65 cm **79857.5**

NEW



CRYSTAL MOSAIC GREY



15 m
65 cm **79847.6**

NEW

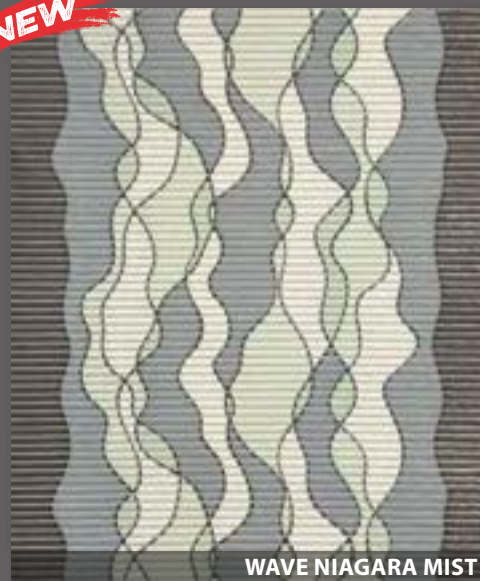


STRIPES GREY / BLUE



15 m
65 cm **79848.3**

NEW



WAVE NIAGARA MIST



15 m
65 cm **79856.8**

SOFTY-TEX®





NEW



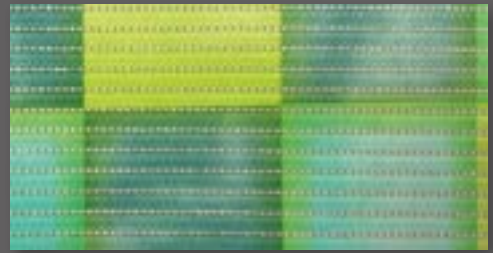
PALM LEAVES VERDIGRIS



15 m
65 cm **79849.0**



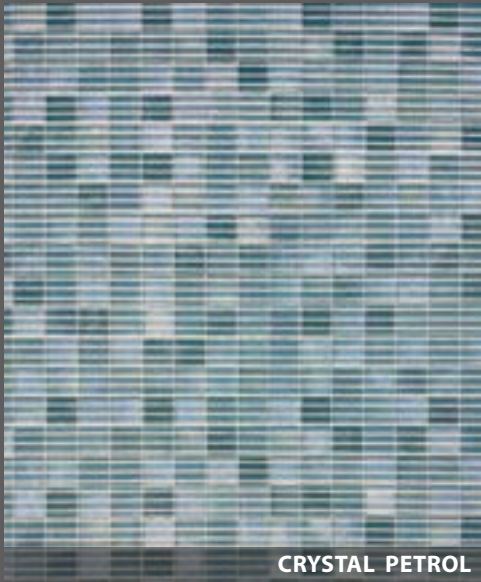
NEW CUBE GREEN TURQUOISE



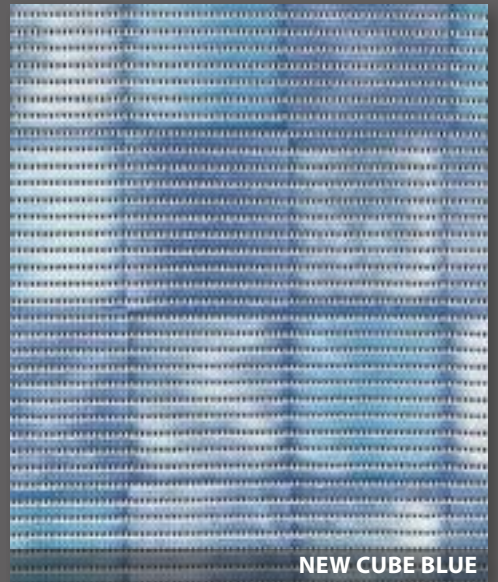
15 m
65 cm **79844.5**

SOFTY-TEX®

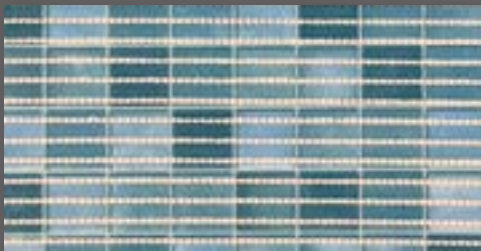





CRYSTAL PETROL



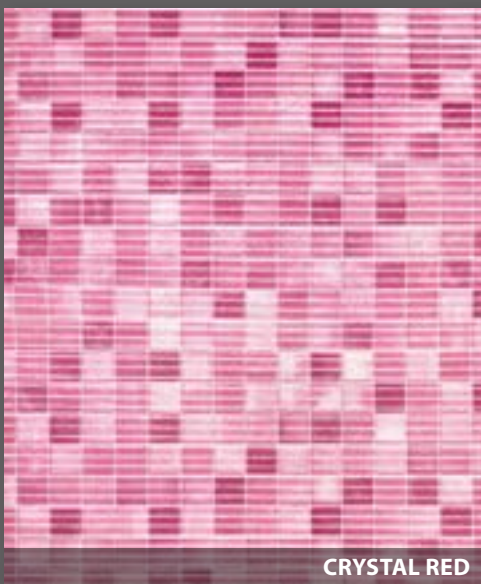
NEW CUBE BLUE



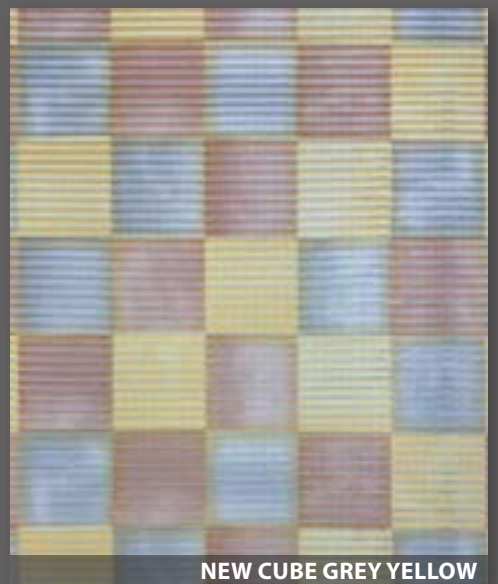
 15 m
65 cm **79840.7**



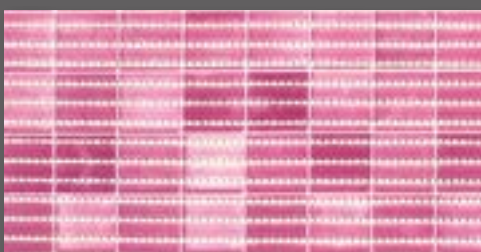
 15 m
65 cm **79843.8**




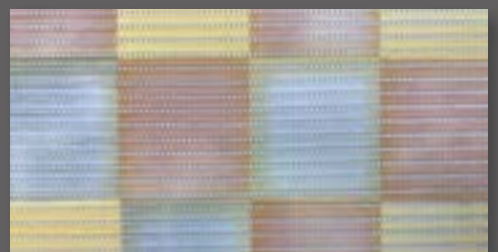
CRYSTAL RED




NEW CUBE GREY YELLOW



 15 m
65 cm **79841.4**



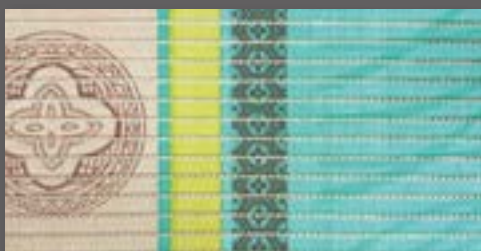
 15 m
65 cm **79842.1**
130 cm **79942.8**

SOFTY-TEX®





HELIOS PASTEL



15 m
65 cm **79836.0**



RHOMBUS ALMOND



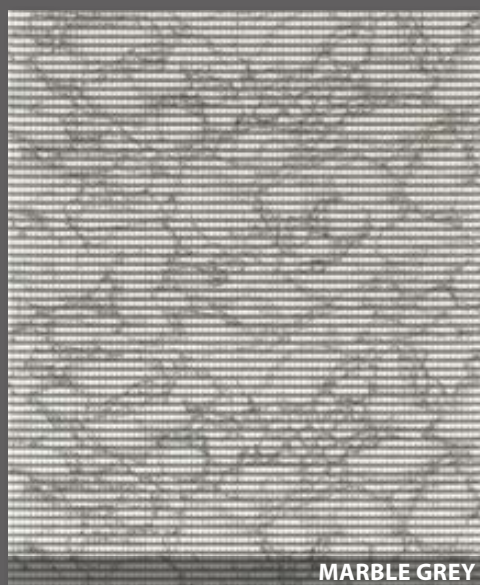
15 m
65 cm **79834.6**



RHOMBUS DUSK BLUE



15 m
65 cm **79835.3**



MARBLE GREY



15 m
65 cm **79811.7**
130 cm **79911.4**

SOFTY-TEX®





ISLANDS



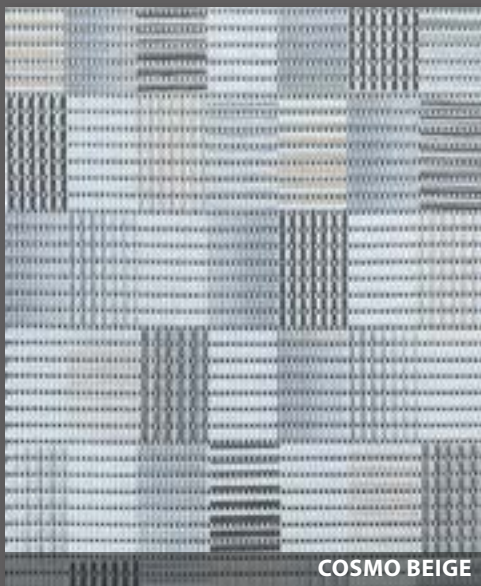
15 m
65 cm **79838.4**



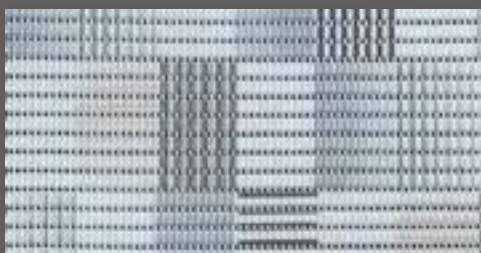
KELA



15 m
65 cm **79827.8**



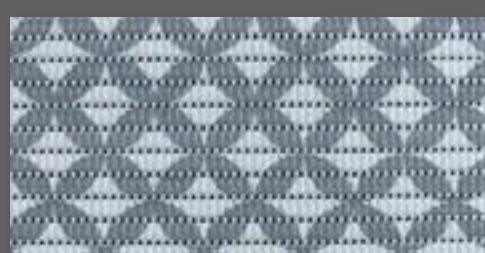
COSMO BEIGE



15 m
65 cm **79839.1**
130 cm **79939.8**



CIRCLES GREY



15 m
65 cm **79845.2**

SOFTY-TEX®

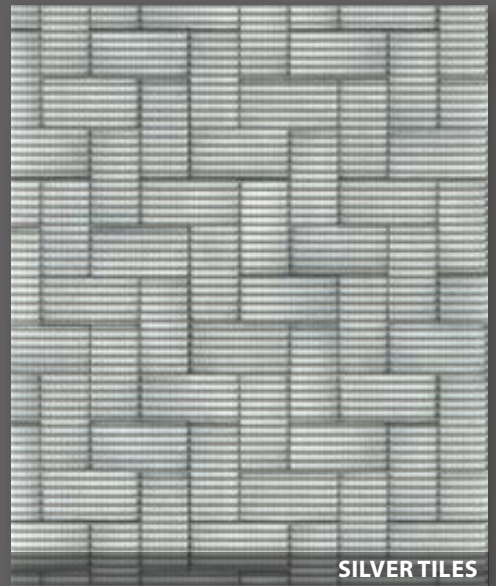




SOFT MOSAIC GREY



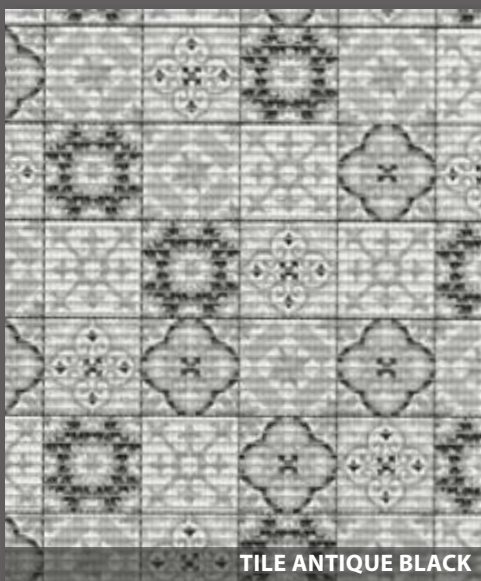
15 m
65 cm **79832.2**



SILVER TILES



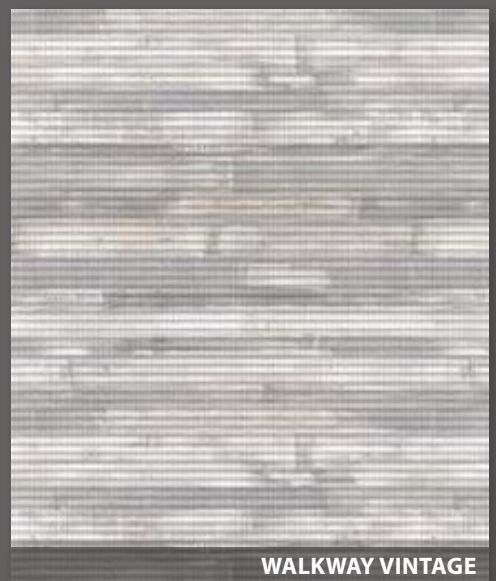
15 m
65 cm **79814.8**
130 cm **79914.5**



TILE ANTIQUE BLACK



15 m
65 cm **79826.1**

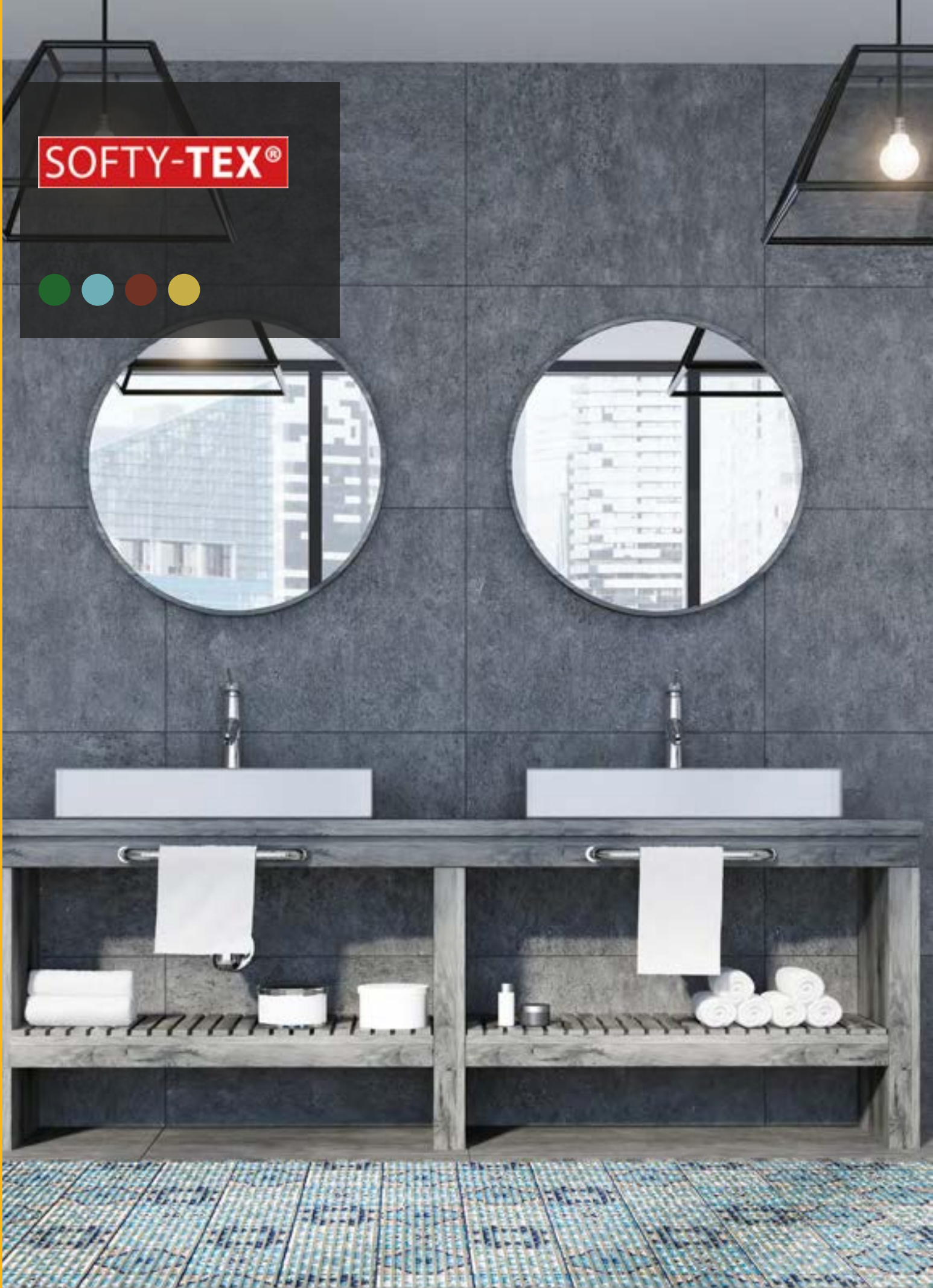


WALKWAY VINTAGE



15 m
65 cm **79825.4**
130 cm **79925.1**

SOFTY-TEX®





TILE ANTIQUE BLUE



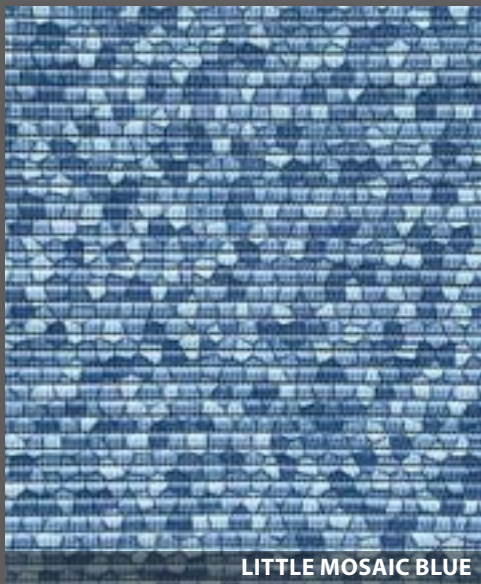
LAGOON



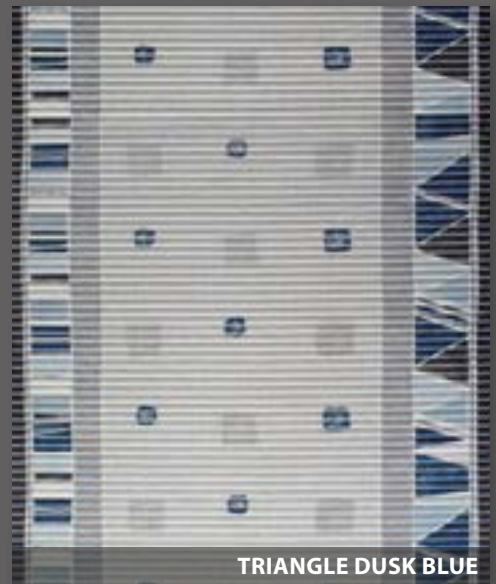
15 m
65 cm **79828.5**



15 m
65 cm **79812.4**
130 cm **79912.1**



LITTLE MOSAIC BLUE



TRIANGLE DUSK BLUE



15 m
65 cm **79817.9**
130 cm **79917.6**



15 m
65 cm **79837.7**

SOFTY-TEX®

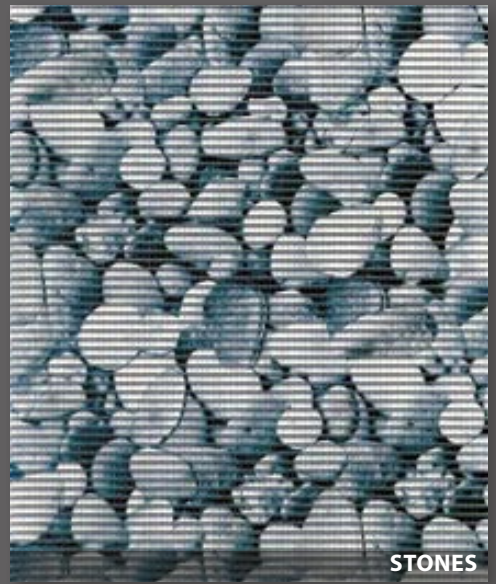




MONSTERA TURQUOISE



15 m
65 cm **79819.3**
130 cm **79919.0**



STONES



15 m
65 cm **79810.0**
130 cm **79910.7**



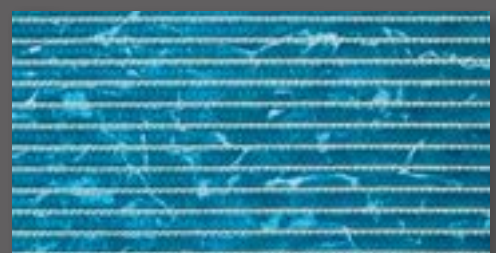
SHELLS



15 m
65 cm **79820.9**



WATER TURQUOISE



15 m
65 cm **79829.2**

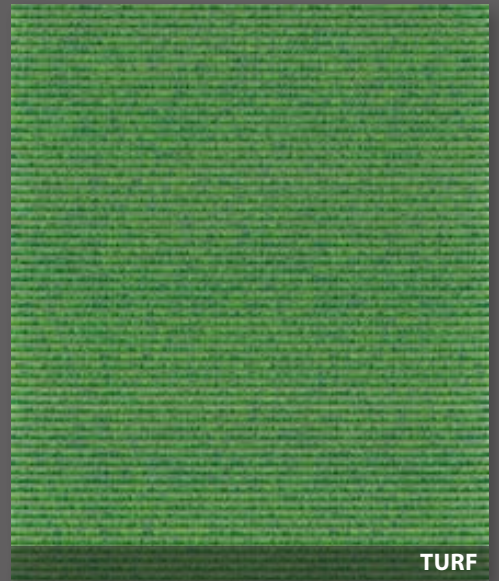
SOFTY-TEX®



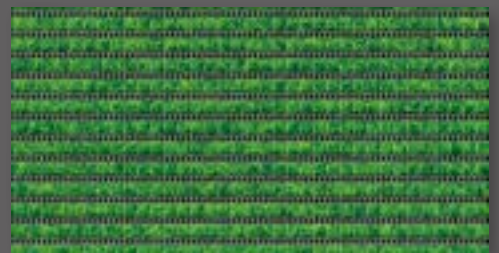
PLANK BROWN



15 m
65 cm **79821.6**
130 cm **79921.3**



TURF



15 m
65 cm **79822.3**
130 cm **79922.0**




WEAVE YELLOW




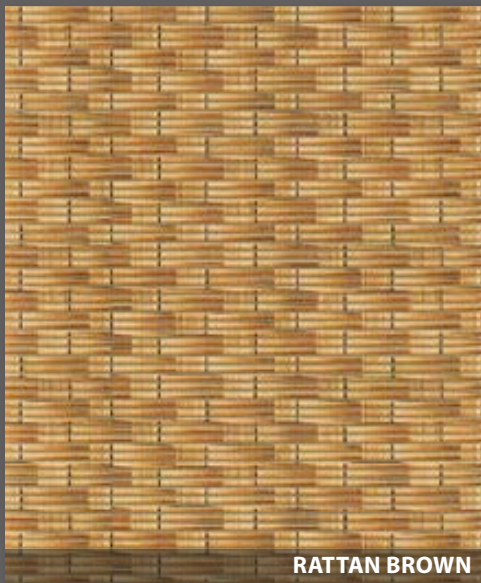
TILE WOOD



 15 m
65 cm **79823.0**



 15 m
65 cm **79816.2**



RATTAN BROWN




AFRICAN WOOD DARK BROWN



 15 m
65 cm **79813.1**
130 cm **79913.8**



 15 m
65 cm **79830.8**

SOFTY-TEX®

Unis

Colours



NEW



LEMON YELLOW

65 cm — 15 m
79853.7

NEW



GREEN GLOW

65 cm — 15 m
79852.0



WHITE

65 cm — 15 m
79804.9

NEW




POTTING SOIL

65 cm — 15 m
79855.1

NEW




ORANGE OCHRE

 ————— 15 m
65 cm **79854.4**

NEW




VIVA MAGENTA

 ————— 15 m
65 cm **79851.3**



BORDEAUX

 ————— 15 m
65 cm **79805.6**

NEW



PROUD PEACOCK

 ————— 15 m
65 cm **79850.6**



JADE CREAM

 ————— 15 m
65 cm **79808.7**



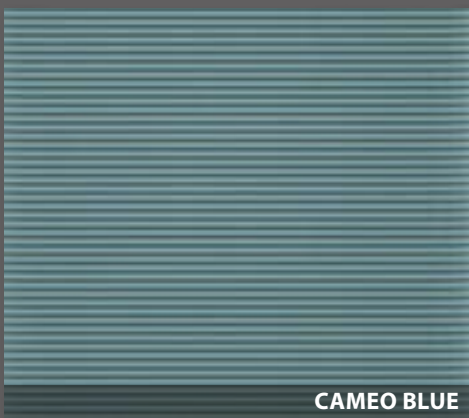
LIONS BLUE

 ————— 15 m
65 cm **79807.0**



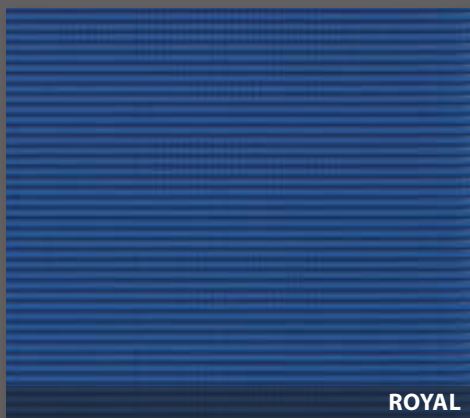
BEIGE

 ————— 15 m
65 cm **79800.1**




CAMEO BLUE

 ————— 15 m
65 cm **79809.4**



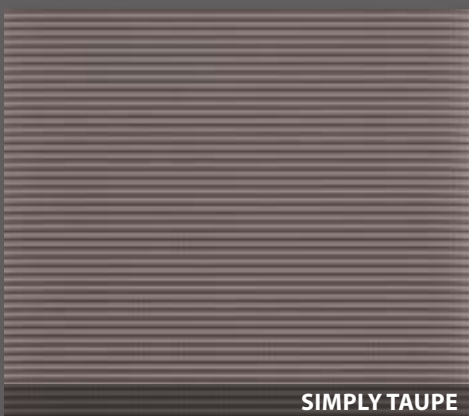
ROYAL

 ————— 15 m
65 cm **79802.5**




GREY

 ————— 15 m
65 cm **79801.8**
130 cm **79901.5**




SIMPLY TAUPE

 ————— 15 m
65 cm **79806.3**



BLACK

 ————— 15 m
65 cm **79803.2**